

# Madelia Area Chamber of Commerce NewsLetter February 2026

## Madelia Area Chamber of Commerce



Katie Wolle  
Executive Director  
chamber@madeliamn.com  
(507) 642-8822

## 2026 Madelia Area Chamber of Commerce Board of Directors



Kelsey Cooling  
Embars Cocktail Lounge & Bar



Caleb Fenske  
Lost Sanity Brewing



Laura Sorenson  
Linden Sky Boutique



Ashley Goossen  
Pioneer Bank



Butch Dwyer  
Insurance Services Plus



Tim Flitter  
Thrivent Financial



Dan Hawkes  
Commercial Condos



Josh Schoener  
Madelia Health



Jesus Rico Nieto  
Massage by Jesus Rico Nieto

**Madelia Area Chamber of Commerce & Visitors Bureau  
Executive Director's Report – 2025 Reflection**

**As we reflect on 2025, I extend my sincere appreciation to our Chamber members, volunteers, and Board of Directors whose ongoing support allows the Madelia Area Chamber of Commerce to fulfill its mission. In a small-town setting, collaboration and trust are essential, and the continued engagement of our members is what makes it possible for the Chamber to advocate for, connect, and support local businesses and organizations.**

**·Membership growth remained steady this year with the addition of six new members. The Chamber continued to strengthen its role as a connector by building and maintaining strong partnerships with the City of Madelia Economic Development Authority (EDA) and the Madelia Area Redevelopment Corporation (MARC). These relationships are vital to aligning business needs with community development efforts and ensuring that local voices are represented in economic conversations and planning.**

**·Throughout 2025, the Chamber focused on creating opportunities for member engagement, education, and visibility. Through partnerships with the City of Madelia EDA and local businesses, the Chamber supported Lunch and Learn sessions and networking opportunities designed to encourage collaboration, share resources, and address challenges unique to small-town businesses. These efforts helped foster relationships, knowledge sharing, and peer support within the business community.**

**·Marketing and promotion remained a key area of focus. The Chamber works daily to promote Madelia as a place to shop, work, live, and visit by sharing business referrals, highlighting products and services, promoting job opportunities, assisting with relocation inquiries, offering community tours, and connecting volunteers with organizations. In 2025, the Chamber reached millions of viewers through social media, website traffic, and digital marketing. The Madelia Money program generated approximately \$14,000 in local sales, directly supporting Chamber member merchants and reinforcing the importance of keeping dollars local.**

**·A new marketing initiative was launched in partnership with Blue Foot Productions to create a series of professional video features showcasing Chamber members. The Chamber was awarded a \$3,500 Explore Minnesota Tourism Grant to support this project, with matching funds currently halfway raised. These videos are designed as long-term assets that will continue to promote local businesses and the Madelia area through social media, Google Ads, and regional marketing efforts for years to come.**

**·Looking ahead to 2026, the Chamber is focused on thoughtful growth and strategic support for its members and community. This includes celebrating the 50th year of Madelia Park Days, enhancing partnerships, expanding opportunities for local businesses and musicians, and seeking additional support for initiatives such as the Rivers Edge Arts and More Fair. These efforts are rooted in the Chamber's commitment to strengthening Madelia's small-town economy while preserving the character and relationships that make our community unique.**

**·Each month we share information, events, and activities in the chamber newsletter, on social media and on the radio. Interested in getting your business or organization spotlighted in the Chamber newsletter and/or on social media? Send your information to [chamber2@madeliamn.com](mailto:chamber2@madeliamn.com) by the 20<sup>th</sup> each month. Our Madelia Area Chamber of Commerce newsletter is emailed out to all members, posted on our website, and shared on social media; information shared in the newsletter is also highlighted in the monthly KNUJ Radio Spotlight.**

**·As I continue in my role as Executive Director, now with just over two years behind me, I remain committed to building strong relationships, supporting Chamber members, and advancing partnerships that create a resilient and connected business community. Together, we continue to strengthen the Madelia Area Chamber of Commerce and the small-town businesses that make our community thrive.**

**Thank you for your continued support and partnership with Madelia Area Chamber of Commerce!**



MADELIA ARTS  
*collaborative*



# Casting Call

Want to dabble in low stakes acting? Be part of our original short "THE GREENER GRASS." The play has a 10 minute run time and we will meet 4 times to rehearse.

Synopsis: A short play about learning to speak one another's language and that what is watered grows.



**Performance February 13  
7:00 PM**



**Lost Sanity Brewery  
12 W Main Street  
Madelia, MN**

**PM ON FACEBOOK OR:**



[madeliaarts.com](http://madeliaarts.com)



[madeliaartscollaborative@gmail.com](mailto:madeliaartscollaborative@gmail.com)

# NEW YEAR, NEW SPEEDS

# 2026



*Upgrade Today!*

Your home is getting smarter, so should your internet.

 507.642.5555

 [www.chriscomco.net](http://www.chriscomco.net)



**Christensen**  
Communications Company



Jenn Eager

**YOUR  
POLICY  
COMES  
WITH A**

**LOCAL AGENT**

Auto

Home

Life

Business

Farm

*See Jen Today!*

*Citizens*

— AGENCY MINNESOTA —

102 South Broadway, La Salle • (507) 375-3537  
[www.cbmnagency.com](http://www.cbmnagency.com) • [jeager@citizensmn.com](mailto:jeager@citizensmn.com)

# The Wellness Note

Did you know . . . that about 74% of American adults are overweight or obese?

A few years ago, I became part of that statistic. Life's curveballs mess with even the best of efforts.

For me, it was severe hip bursitis, a house sale & big move, along with menopause – a combo I wouldn't wish on anyone.

Even worse, the extra pounds brought some of the many **weight-related health issues**.

Looking at that July picture brings some tears.

- My blood pressure had increased.
- Every joint in my body was feeling the extra strain.  
*(Did you know that every extra pound of weight is equal to 5 extra pounds of pressure on your joints?)*
- I remember how tight my clothes felt.
- Overall sadness was always lingering.



If you can relate to any of this, you're not alone.

And there IS something you can do about it – naturally.

Since July, I've released about 20 pounds, the hip pain is gone and this is easily the best I've felt in about 5 years.

I'm supporting my muscles, my joints feel better, my blood pressure is down and I'm healing my body from the inside out.

Most importantly—I feel happier, more motivated and more like ME again.

Sharing this isn't easy but if it helps even one person, it's worth it.

If you'd like to chat, swap healthy recipes, tips or encouragement, I'd love to connect - message me anytime.

Sometimes a simple conversation is the first step towards healing. ❤️



Reach out anytime!

Lori Denn  
507-276-0664

hello@litupliving.com  
www.litupliving.com



Do what you can – progress, not perfection!

# Explore The World WITH US



For over 25 years, APTA Travel—formerly known as Amber Pietan Travel Agency—has been designing unforgettable, customized luxury vacations. Founded by Amber Pietan in 2013, APTA Travel has become synonymous with exceptional service, attention to detail, and personalized experiences that turn travel dreams into reality.



## ABOUT US

Amber, a Certified Travel Associate and Luxury Lifestyle Specialist, brings decades of expertise in luxury cruises, group travel, honeymoons, historical tours, destination weddings, and more. She and her team of eight expert travel advisors specialize in destinations worldwide, including Europe, the Caribbean, Asia, and beyond, and work hard to deliver curated experiences with unbeatable value.

## NEW ESCORT DIVISION

We're proud to announce our new tour escort division based in Mankato, offering guided tours in partnership with Collette Tours and Southwest Tour & Travel.

## REFERRAL PROGRAM

Send a friend and earn a \$25 travel gift certificate!

**WHETHER YOU'RE PLANNING A RIVER CRUISE, A FAMILY REUNION, OR THE BUCKET LIST TRIP OF A LIFETIME, APTA TRAVEL IS YOUR TRUSTED PARTNER EVERY STEP OF THE WAY.**

**YOUR ADVENTURE BEGINS HERE | 507-382-0669**

# WATONWAN COUNTY HISTORICAL SOCIETY



423 Dill Avenue SW, P.O. Box 126, Madelia, MN 56062  
watcohistory@gmail.com 507-642-3247  
Facebook: Watonwan County Historical Society



Trinity Lutheran Church  
406 W. Main Street  
Madelia MN 56062  
507-642-8301

[www.trinitymadelia.com](http://www.trinitymadelia.com)  
Facebook: Trinity Evangelical Lutheran  
Church of Madelia

## **February Happenings**

**Sundays at 9:30am      Worship followed by Mugs to Mingle  
(coffee, cookies, and fellowship)**

### **Wednesdays - Community Meal and Church School**

**1:00pm Quilting**

**2:00pm Coffee Hour – All are welcome!**

**5:30pm Free Community Meal**

**6:10pm Church School (February 4<sup>th</sup> and 11<sup>th</sup>)**

**6:20pm Confirmation (February 4<sup>th</sup> and 11<sup>th</sup>)**

### **Sunday, February 1**

**Annual Meeting after Worship**

### **Wednesday, February 18<sup>th</sup>**

**7pm Ash Wednesday Worship**

### **Monday, February 23<sup>rd</sup>**

**7pm Book Club**

### **Wednesday, February 25<sup>th</sup>**

**6:30pm Lenten Worship**

### **Pray Without Ceasing – Each Tuesday**

**11:15am Living Meadows – all are invited**

105 W MAIN ST MADELIA MN

# EMBAR



07 PM

11 PM

# KARAOKE

*Night*

JOIN US

FRIDAY, JAN 23

**FREE  
ENTRY**

**SING LOUD. GIVE BACK**

FOR EVERY SONG PERFORMED, WE WILL  
DONATE \$1 TO MADELIA HEALTH FOUNDATION

FEBRUARY 1ST

-  
APRIL 15TH



## ✓ Why Join?

\*Save money on your membership

\*Unlimited rounds all season

\*Support your local golf course

# 2026 GOLF Memberships

## TAX REFUND SPECIAL

FAMILY	\$450.00
SINGLE	\$350.00
SENIOR (65+)	\$300.00
JUNIOR (19-24)	\$200.00
STUDENT (0-18)	\$100.00



507-642-3608



WWW.MADELIAMN.COM

## INSURANCE SERVICES PLUS

*All Lines of Insurance Available*

Contact us for a quote!

- Homeowners
- Auto & Recreational Vehicles
- Life & Health
- Farm & Crop
- Commercial/Business



4 E. Main St.  
Madelia, MN



129 S. Main St.  
Lake Crystal, MN



1-800-385-3950



info@ispmn.com



www.ispmn.com

# FEBRUARY 2026

**Salem of Madelia  
Trinity Fieldon**

Trinity Elder: Ray  
Salem Elder: Tim  
Altar Guild: LaVonne

January '26						
S	M	T	W	T	F	S
				1	2	3
4	5	6	7	8	9	10
11	12	13	14	15	16	17
18	19	20	21	22	23	24
25	26	27	28	29	30	31

March '26						
S	M	T	W	T	F	S
1	2	3	4	5	6	7
8	9	10	11	12	13	14
15	16	17	18	19	20	21
22	23	24	25	26	27	28
29	30	31				

Sunday	Monday	Tuesday	Wednesday	Thursday	Friday	Saturday
<b>1 SEPTUAGESIMA</b> 7:30 Trinity Service 9:00 Salem Service 10:00 Sunday School	<b>2 THE PRESENTATION</b> 9:30 Pastor MLHS	<b>3</b> 9:30 Pastor MLHS Circuit Pastors Mtg	<b>4</b> 9:30 Pastor MLHS	<b>5</b> 9:30 Pastor MLHS	<b>6</b> 9:30 Pastor MLHS	<b>7</b>
<b>8 SEXAGESIMA</b> 7:30 Trinity Service 9:00 Salem Service 10:00 Sunday School 11:00 Chili @ Salem	<b>9</b> 9:30 Pastor MLHS	<b>10</b> 6:30 Womens Prayer 9:30 Pastor MLHS	<b>11</b> 9:00 MLHS Chapel 9:30 Pastor MLHS 3:30 pm Catechism-II	<b>12</b> 9:30 Pastor MLHS Circuit Pastors Mtg	<b>13</b> 9:30 Pastor MLHS	<b>14</b>
<b>15 QUINQUAGESIMA</b> 7:30 Trinity Service 9:00 Salem Service 10:00 Sunday School 6 pm Chosen @ Salem	<b>16</b> 9:30 Pastor MLHS  6:30 pm Book Club	<b>17</b> 6:30 Womens Prayer 9:30 Pastor MLHS	<b>18 ASH WEDNESDAY</b> 9:30 Pastor MLHS 3:30 pm Catechism-II  6:30 Service @ Salem 7:30 Parochial Aid Mtg	<b>19</b> 9:30 Pastor MLHS  3:30 pm Ladies @ Salem	<b>20</b> 9:30 Pastor MLHS	<b>21</b>
<b>22 LENT I</b> 7:30 Trinity Service 9:00 Salem Service 10:00 Sunday School 11-1 MLHS Waffle Feed 6 pm Chosen @ Salem	<b>23</b> 9:00 MLHS Chapel	<b>24 ST. MATTHIAS</b> 6:30 Womens Prayer	<b>25</b>  3:30 pm Catechism-II 5:30 Soup @ Salem 6:30 Service @ Salem	<b>26</b>	<b>27</b>	<b>28</b>
<b>1 MARCH</b>						
<b>Notes:</b>	<b>Sunday Treats @ Salem</b>		<b>Parish Birthdays</b>			<b>Anniversaries</b>
2/8 - Annual Chili cookoff 2/15 & 2/22 Chosen watch party at Salem 6 pm 2/18 Lent begins with communion at Salem	2/1 Carol N., Jenna, Madys, Lynne, Laurell 2/8 Pfeffers, Lil 2/15 Sandy, LaVonne, Volbrechts 2/22 Carol F., Mary, Leesa, Lynne	2/1 Ka V. 2/2 Brahm S. 2/3 Alaysa B. 2/5 Joan K. 2/5 Raylan A.	2/6 Jerry S. 2/6 Jordan B. 2/7 Judy Z. 2/8 Clark B. 2/9 Gavin L.	2/11 LaVonne T. 2/24 Betty B. 2/24 Zanna S. 2/25 Holly D. 2/27 Doug P.	2/5 Ray & Karen K. 2/12 Mike & Leesa S. 2/23 Todd & Glenda A.	

# Crochet & Sip Chunky Blankets

February 18th @ 6:30pm  
Madelia Legion



\$5.00

Learn how to crochet your  
own chunky blanket  
Minimum of 8 bundles of  
chunky yarn needed

# February 2026

# Faith ~ Lake Hanska

God's People... Leading Others to the Love of Jesus

Sun	Mon	Tue	Wed	Thu	Fri	Sat
<b>1 Communion</b> 9:00 AM Faith 10:30 AM Lake Hanska  4 <sup>th</sup> Sunday after Epiphany	2	<b>3</b> 10:00 AM Chair Yoga at Faith 11:15 AM Pray without Ceasing at Living Meadows 1:00 PM Coffee & Communion at Living Meadows	<b>4</b> 9:00 AM LH Quilting 3:15-5:00 PM J.A.M. at First Presbyterian 6:00-7:30 PM Confirmation at Faith	<b>5</b> 10:00 AM Chair Yoga at Faith	6	7
<b>8 Communion</b> 9:00 AM Faith 10:30 AM Lake Hanska  5 <sup>th</sup> Sunday after Epiphany	9	<b>10</b> 10:00 AM Chair Yoga at Faith 11:15 AM Pray without Ceasing at Living Meadows	<b>11</b> 3:15-5:00 PM J.A.M. at First Presbyterian 6:00-7:30 PM Confirmation at Faith	<b>12</b> 10:00 AM Chair Yoga at Faith 7:00 PM	<b>13</b>	<b>14 Valentine's Day</b> 8:30 AM Men's Morning Out Bible Study
<b>15</b> 9:00 AM Faith 10:30 AM Lake Hanska  Transfiguration of Our Lord	<b>16 President's Day</b> 9:00 AM Ruth Bible Study	<b>17</b> 10:00 AM Chair Yoga at Faith 11:15 AM Pray without Ceasing at Living Meadows  <b>NEWSLETTER                      DEADLINE</b>	<b>18 Ash Wednesday</b> 3:15-5:00 PM J.A.M. at 1 <sup>st</sup> Presb. <b>3:30 PM Ash Wed.                      service at LH</b> 6:00-7:30 PM Confirmation at Faith <b>7:00 PM Ash Wed.                      service at F</b>	<b>19</b> 10:00 AM Chair Yoga at Faith	<b>20</b>	<b>21</b>
<b>22</b> 9:00 AM Faith 10:30 AM Lake Hanska  1 <sup>st</sup> Sunday of Lent	23	<b>24</b> 10:00 AM Chair Yoga at Faith 11:15 AM Pray without Ceasing at Living Meadows 5:00 PM Living Meadows Annual Meeting at Faith	<b>25 Lent Wed.</b> 3:15-5:00 PM J.A.M. at First Presbyterian <b>3:30 PM                      Lenten service/LH</b> 3:30-5:30 PM Madelia Food Shelf Open House 6:00-7:30 PM Confirmation at Faith <b>7:00 PM                      Lenten service/F</b>	<b>26</b> 10:00 AM Chair Yoga at Faith	<b>27</b> 6:00-11:00 AM FFA Pancake Breakfast at Faith	<b>28</b> 8:30 AM Men's Morning Out Bible Study

**Faith Lutheran Church**

306 Abbot Ave SW ~ Madelia, MN 56062  
 Phone: 507-642-8500  
 Facebook.com/FOSParish  
 Website: www.faithoursaviours.org  
 E-mail: office@faithoursaviours.org

**Lake Hanska Lutheran Church**

17923 115<sup>th</sup> St ~ PO Box 65 ~ Hanska, MN 56041  
 Phone: 507-439-6635  
 (FB) Lake Hanska Lutheran Church

**Ralph Flitter ~ Synod Authorized Minister**

Cell Phone: 507-317-4204 E-mail: flitteralph@gmail.com

**Bethel**

**Kids**

**6:00-7:15 pm  
K- 5<sup>th</sup> Grade  
Wednesdays**

**Bible Stories, Music, Games**

**Bethel Church  
501 4<sup>th</sup> St. SW  
Madelia (507) 642-8162**

**Youth Group**

**6:30-8:00 pm  
6<sup>th</sup>-12<sup>th</sup> Grade  
Wednesdays**

**Hang, Eat, Play, Discover, Worship**

**Did You  
KNOW?**



**WEDNESDAY**

# **TRIVIA**

**1ST AND 3RD WEDNESDAY**

**7 PM**

**UP TO 4 PEOPLE PER TEAM**

**COME EARLY TO SECURE YOUR  
SPOT**

**DOORS OPEN AT 5PM**



**BEER! • FUN! • PRIZES!  
TAPROOM • 12 WEST MAIN ST.**



Relax & Rejuvenate



**MASSAGE**  
BY JESÚS

**Book Your  
Bliss Today!**

**Indulge in Our Services:**

- Hot Stone Massage
- Deep Tissue Massage
- Cupping Therapy
- Gua Sha



**Why Choose Us:**

- Skilled Therapist
- Peaceful Environment
- Customized Treatments
- Premium Products



**Contact Us:**

Services @ Tressa Veona Salon

507-621-0476

[massagebook.com/biz/massagebyjesus](http://massagebook.com/biz/massagebyjesus)

# M A D E L I A O P P O L Y 2025 EDITION

**\$45 DONATION**

<b>MADILIA</b> City of the Prairie 12 Drew Ave NE PO Box 150 Madelia, MN 56122 (507) 422-2253 www.madeliastats.com E-MAIL citystaff@cityofmadelia.com
<b>MADILIA COMMUNITY FOOD SHELF</b> 
<b>FARRISH JOHNSON</b> LAW OFFICE, P.A. 110 West Main St Madelia, MN Phone: 507.642.2111 www.farrishlaw.com
<b>SORENSEN Juice Value.</b> <b>F A T E</b>  <b>F A T E</b>
<b>Sweet Indeed LLC</b> Bakery & Coffee House • fresh bakery items • donuts • • doughnut cakes • lunch specials • delivery coffee • frappes 6 W. Main St. 507-642-2253

 3333 \$100	<p>Under auspices also in Southern Minnesota</p> <b>MADILIA MINNESOTA</b> "Madelia Area Chamber of Commerce" 117 W Main St   Madelia (507) 642-8822 www.visitmadelia.com PRICE \$200	<b>INCOME TAX</b> <b>I BELING</b> Taxes & Bookkeeping Madelia, MN tbeling@belingtaxes.com 507-642-8120 PAY \$200 OR 10%	<b>WORATSCHEK EXCAVATION</b> James Woratschka Owner/Operator Madelia, MN • 507-630-1245 Backhoe, Excavator, Dozer, Skid Loader, Belly & Side Dump PRICE \$60	<b>MADILIA COMMUNITY FUND</b> <b>House of Print</b> 322 Benzel Ave SW Madelia, MN 507.209.3297 www.4hop.com DRAW A CARD	<b>MADILIA HEALTH</b> 507-642-3255 121 Drew Ave SE • Madelia, MN www.madelihealth.org PRICE \$60
-------------------	---	---	--	---	--

**Christensen**  
COMMUNICATIONS COMPANY  
START COLLECT \$300

[HTTPS://SQUARE.LINK/U/ONLMSOP5](https://square.link/u/onlmsop5)



Available at  
Madelia Area  
Chamber Office

WATONWAN COUNTY LIBRARIES BRING YOU...

# POKEMON PARTY

**DARFUR LIBRARY:**  
**FEB. 26<sup>TH</sup>: 4:30-5:30 PM**  
**ST. JAMES LIBRARY:**  
**FEB. 27<sup>TH</sup>: 3:30-5:00 PM**  
**MADelia LIBRARY:**  
**FEB. 27<sup>TH</sup>: 3:30-4:30 PM**  
**BUTTERFIELD LIBRARY:**  
**FEB. 27<sup>TH</sup>: 3:30-4:30 PM**  
**LEWISVILLE LIBRARY:**  
**FEB. 27<sup>TH</sup>: 4:30-5:30 PM**

**PARENTS ARE WELCOME TO JOIN THEIR KIDS!**

**JOIN US ON POKÉMON DAY TO TRY AND BE THE VERY BEST! ENJOY CATCHING POKÉMON, MAKING YOUR OWN POKÉMON CARD, AND MORE.**

WATONWAN COUNTY LIBRARIES -  
MADelia BRANCH

LAS BIBLIOTECAS DEL CONDADO DE WATONWAN TE TRAEN...

# POKEMON FIESTA

**DARFUR BIBLIOTECA:**  
**FEB. 26<sup>TH</sup>: 4:30-5:30 PM**  
**ST. JAMES BIBLIOTECA:**  
**FEB. 27<sup>TH</sup>: 3:30-4:30 PM**  
**MADelia BIBLIOTECA:**  
**FEB. 27<sup>TH</sup>: 3:30-4:30 PM**  
**BUTTERFIELD BIBLIOTECA:**  
**FEB. 27<sup>TH</sup>: 3:30-4:30 PM**  
**LEWISVILLE BIBLIOTECA:**  
**FEB. 27<sup>TH</sup>: 4:30-5:30 PM**

**¡LOS PADRES SON BIENVENIDOS A ACOMPAÑAR A SUS HIJOS!**

**¡ÚNETE A NOSOTROS EN EL DÍA DE POKÉMON PARA INTENTAR SER EL MEJOR! DISFRUTA ATRAPANDO POKÉMON, CREANDO TU PROPIA CARTA DE POKÉMON Y MUCHO MÁS.**

BIBLIOTECAS DEL CONDADO DE WATONWAN -  
SUCURSAL DE MADelia

## Beaded Forever Plant

Come make an adorable plant that is sure to last forever!



Ages 3rd-6th

**February 3<sup>rd</sup>**  
**@ 3:30-4:30**  
**Madelia Library**

## Planta de Cuentas Eternas

¡Ven a crear una adorable planta que seguramente durará para siempre!



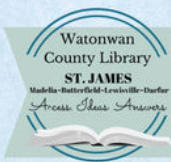
Edades: 3rd-6th

**3 de febrero**  
**de 3:30-4:30**  
**Biblioteca de Madelia**

# Reading in a Winter Wonderland 2026

Winter Reading Program  
January 5-February 28  
Open to Kindergarten-Adult!

Visit your home library to participate!  
Pick up a reading log, record the books you read or listen to  
and turn it in by February 28th for a chance to win prizes!



PRIZES PURCHASED BY FRIENDS  
GROUPS OR WITH COMMUNITY GIFT MONEY

WATONWAN COUNTY LIBRARIES -  
MADELIA BRANCH

## Valentines Tea Party

Come dressed up in your  
tea party best and enjoy  
fun, games, crafts, and a  
story time.

Ages:  
K-2nd



February 10<sup>th</sup>

@ 3:30-4:30 PM

Madelia Library



BIBLIOTECAS DEL CONDADO DE  
WATONWAN - SUCURSAL DE MADELIA

## Día de San Valentín Fiesta del Té

Vengan vestidos con sus  
mejores trajes para la fiesta  
de té y disfruten de  
diversión, juegos,  
manualidades y un tiempo  
de cuentos.

Edades:  
K-2nd

10 de febrero  
de 3:30 a 4:30 PM  
Biblioteca de Madelia



## MOVIE MATINEE

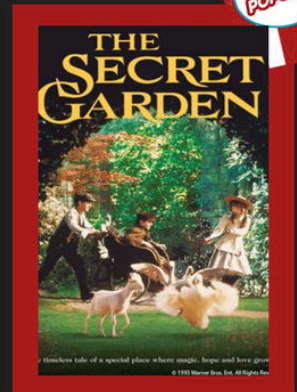
Watowan County/Madelia  
Branch Library

"THE SECRET GARDEN (1993)"  
MONDAY, FEB. 2ND

2:00 PM



In this classic novel  
adaption, a young girl is  
suddenly orphaned and sent  
to live with her withdrawn  
uncle. Feeling neglected,  
she begins exploring her  
new home's estate and soon  
discovers the magic—and  
secrets—that surround her.





**SUPPORTING THOSE IN  
OUR COMMUNITY**

**MADELIA COMMUNITY  
FOOD SHELF**

**Comunidad Madelia  
Estante de alimentose**

**3:30pm  
till**

**5:30pm**

**September 24<sup>th</sup> ~ October 22<sup>nd</sup> ~ November 26<sup>th</sup>**

**December 17<sup>th</sup> ~ January 28<sup>th</sup> ~ February 25<sup>th</sup>**

**24 de septiembre ~ 22 de octubre ~ 26 de noviembre**

**17 de diciembre ~ 28 de enero ~ 25 de febrero**

**Monthly Open House -- New Location!!!**

**421 Dill Ave SW - Madelia Town Hall**

**Between Madelia Pool & Historical Society  
ubicado en el estacionamiento de la piscina**

**Outreach Resources & Additional Referrals:**

*St. Mary's Catholic Church*    *First Presbyterian Church*    *Salem Lutheran Church*

507-642-8305

507-642-8105

(507) 642-8414

*Madelia Health*

*Community Ed/Elementary School*

*Bethel Church*

507-642-5200

(507) 642-3232

(507) 642-8162

*Watowan Cty Human Services*

(507) 375-3294

**Non Perishable Food Donations Accepted At:**

**Sunshine Foods - Madelia Area Chamber**

**Monetary Donations Accepted At:**

**Pioneer Bank - Madelia City Hall**

9/23/25